



Beaufort County
Public Works
Stormwater Infrastructure
Project Summary

Project Summary: Sheldon Washout Repair - Backache Acres

Activity: Routine/Preventive Maintenance

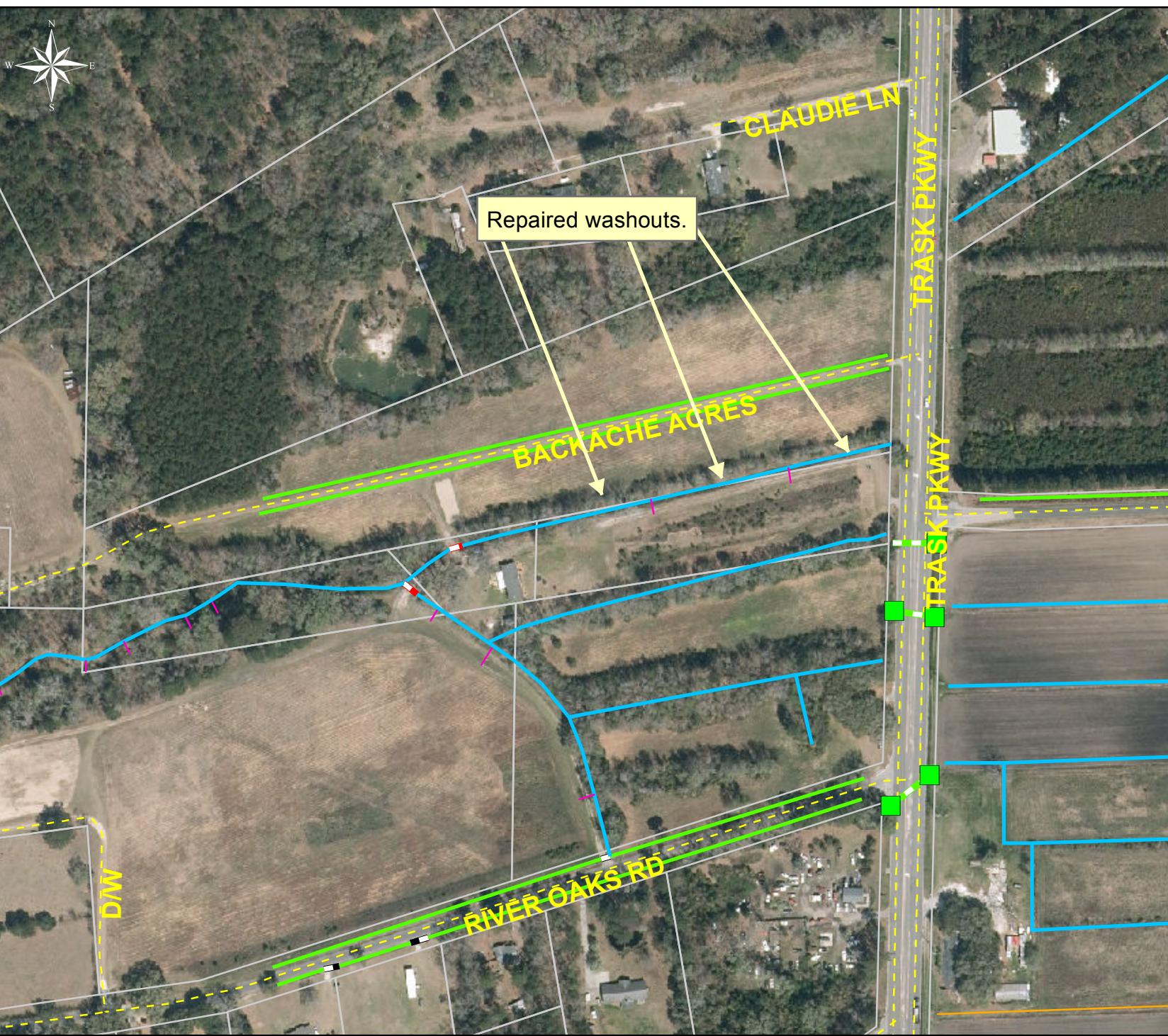
Narrative Description of Project:

Completion: Mar-14

Repaired washouts.

2014-516A / Sheldon Washout Repair	Labor Hours	Labor Cost	Equipment Cost	Material Cost	Contractor Cost	Indirect Labor	Total Cost
AUDIT / Audit Project	0.5	\$10.23	\$0.00	\$0.00	\$0.00	\$6.62	\$16.85
HAUL / Hauling	9.0	\$206.42	\$96.30	\$31.82	\$0.00	\$140.03	\$474.57
RPWO / Repaired Washout	10.0	\$210.44	\$40.10	\$0.00	\$0.00	\$132.30	\$382.84
2014-516A / Sheldon Washout Repair Sub Total	19.5	\$427.09	\$136.40	\$31.82	\$0.00	\$278.94	\$874.25
Grand Total	19.5	\$427.09	\$136.40	\$31.82	\$0.00	\$278.94	\$874.25

(Pictures Not Available)



Project: Backache Acres

Activity: Routine/ Preventive Maintenance

Project #: 2014-516A

Township: Port Royal Island

Completed: March 2014

Legend	
TYPE	
	River
	Creek/Stream
	River/Creek/Marsh BANK
	Channel (fka Outfall)
	Channel Pipe
	Lateral
	Lateral Pipe
	Roadside
	Roadside Pipe
	Road Pipe
	Crossline Pipe
	Driveway Pipe
	Access Pipe
	Bleeder Pipe



1 inch = 256 feet